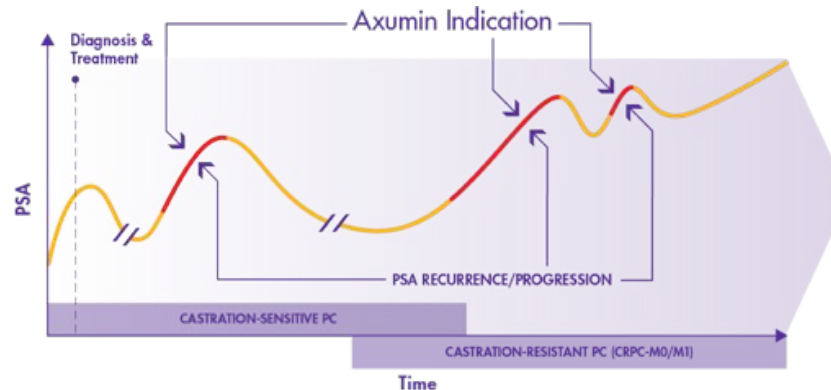
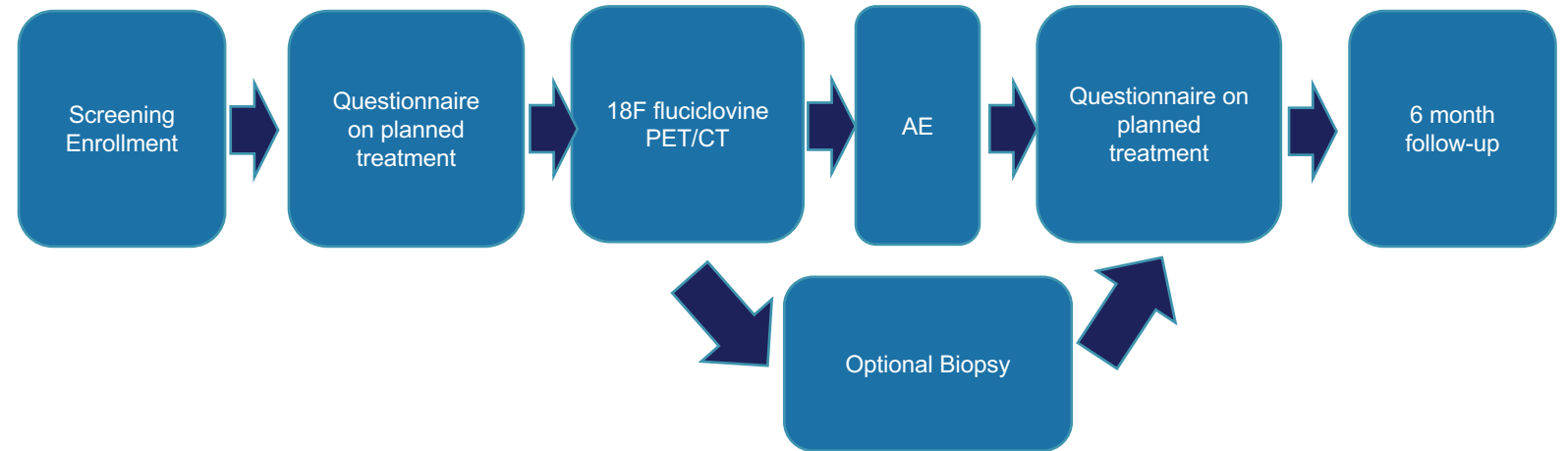


# LOCATE: Fluciclovine F18 PET/CT - Change in Clinical Management & Detection Rates

## → STUDY DESIGN & CHARACTERISTICS

- May 2016 – March 2018
- Open Label; Single Group
- 15 sites across the US
- 213 Patients with suspected BCR
- Confirmed PCa post curative-intent local treatment
- Median age = 67 years
- Median PSA = 1.00 ng/mL
- Median time from initial diagnosis = 54 months
- *Negative or equivocal findings on SOC imaging*

## → STUDY SCHEMA



**Axumin® (Fluciclovine F18) Injection** is indicated for positron emission tomography (PET) imaging in men with suspected prostate cancer recurrence based on elevated blood prostate specific antigen (PSA) levels following prior treatment.

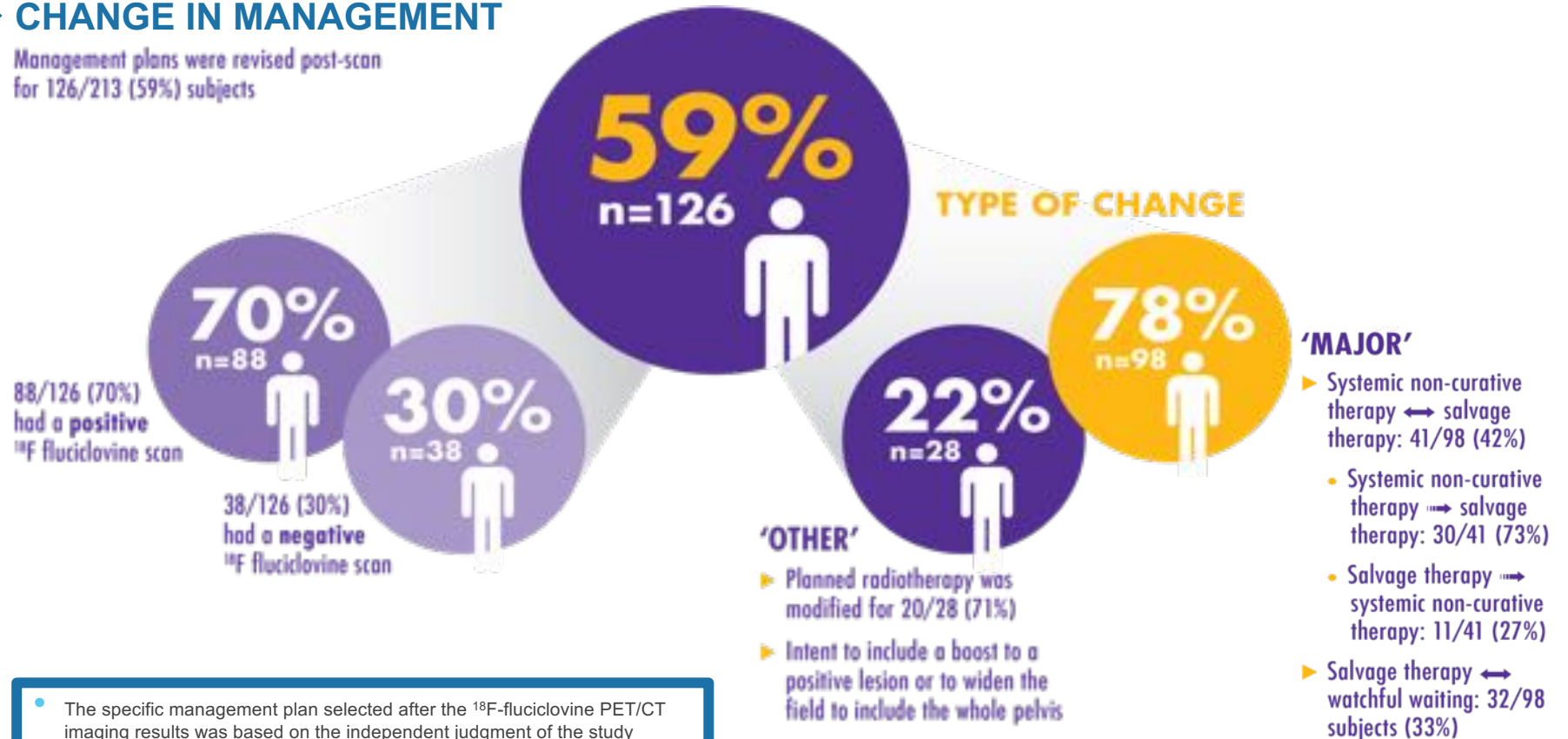
# LOCATE: Change in Clinical Management & Detection Rates

## → DETECTION RATES

PSA (ng/mL)	Detection Rate
0-0.5	31% (n=81)
>0.5-1.0	60% (n=26)
>1.0-2.0	66% (n=29)
>2.0-5.0	77% (n=35)
>5.0-10.0	87% (n=23)
>10.0	95% (n=19)
Overall	57% (n=213)

## → CHANGE IN MANAGEMENT

Management plans were revised post-scan for 126/213 (59%) subjects



- The specific management plan selected after the <sup>18</sup>F-fluciclovine PET/CT imaging results was based on the independent judgment of the study investigators, who utilized any other available confirmatory information.
- The clinical utility of <sup>18</sup>F-fluciclovine PET/CT to identify a particular course of treatment has not been established and clinical correlation, including potential histopathological evaluation of the suspected recurrence site, is recommended.

# Thank You

---